

Comfort

Exclusive



Beachfront

A304

Apartment Area
164,9m²

Internal area
118,8m²

Master Bedroom
25,9m²

Planters
16,0m²

Basement Parking
2 spaces

Apartment type
2-bedroom

Kitchen
19,4m²

Bedroom 1
13,4m²

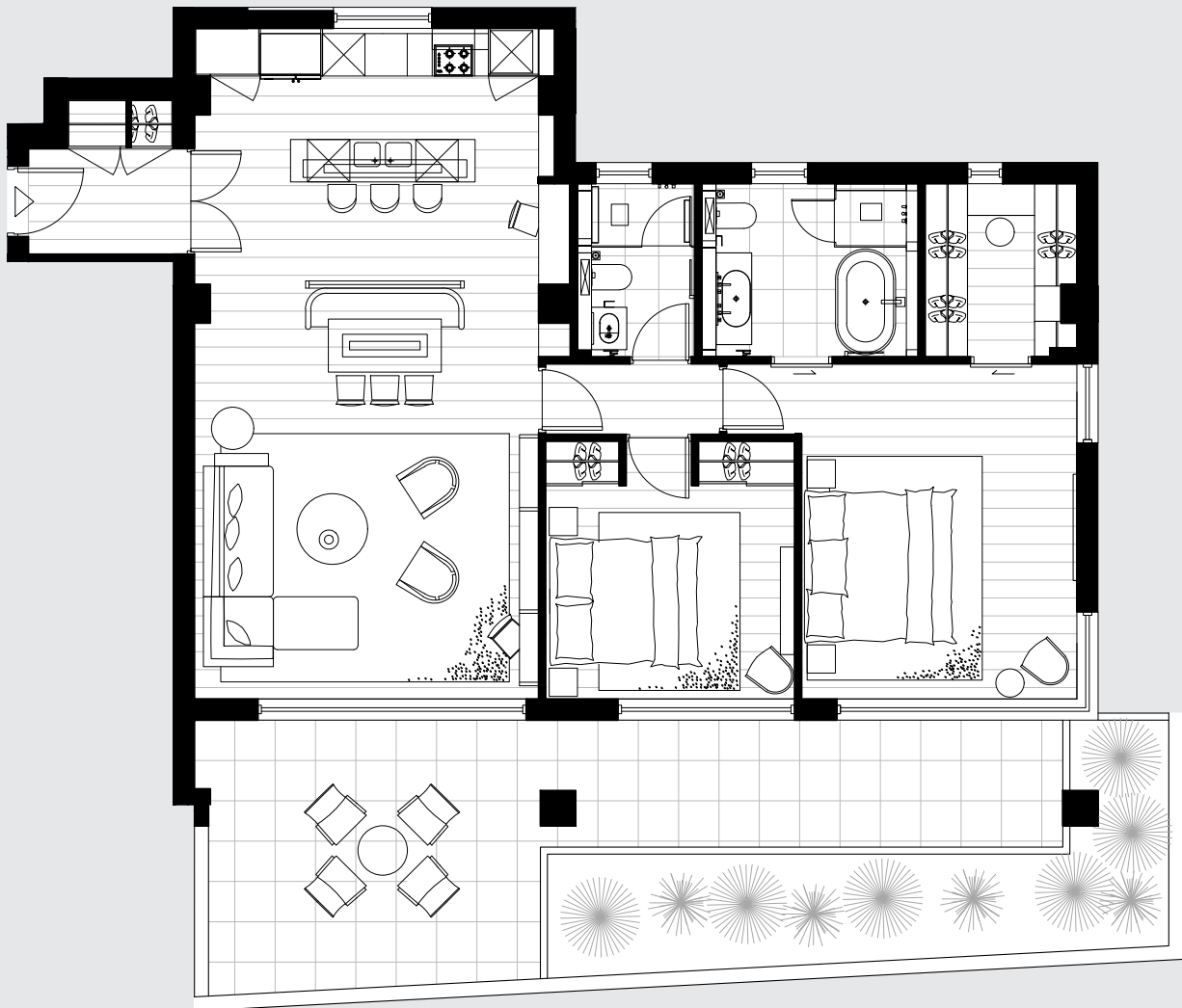
Common Area
14,8m²

Garden
-

Living/Dining area
30,17m²

Covered veranda
31,3m²

Basement Storage
8,0m²



0m 1m 2m 3m 4m 5m 6m

Disclaimer

- These particulars are a general outline only, for the guidance of prospective purchasers, do not constitute the whole or any part of an offer or contract and do not intend to be an offer to sell or solicitation to buy.
- The accuracy of any description, dimensions, references to condition, necessary permissions for use and occupation and other details contained herein is not guaranteed and are not to be relied upon as statements of fact or representations, purchasers must satisfy themselves as to their accuracy.
- No liability is accepted in negligence or otherwise for any loss arising from the use of these particulars.
- All architectural plans & renderings, sketches, graphic materials, prices, plans, specifications, features, dimensions, amenities, existing or future views and photos depicted or otherwise described herein are proposed and conceptual only, which are subject to withdrawal, revisions and other changes, without notice.
- Interior photos may depict options and upgrades that are not representative of standard features and may not be available for all model types, and all depictions of furniture, appliances, counters, soffits, floor coverings and other matters of detail, including, without limitation, items of finish and decoration, are not necessarily included in each unit.
- No guarantees or representations whatsoever are made that existing or future views of the project and surrounding areas depicted by artist's conceptual renderings or otherwise described herein, will be provided or, if provided, will be as depicted or described herein.
- Any view from any unit or from other portions of the Project may in the future be limited or eliminated by future development or forces of nature. The photographs contained in this brochure have been taken off-site and are used to depict the spirit of the lifestyle to be achieved rather than any that may exist or that may be proposed and are merely intended as illustrations of the activities and concepts depicted therein.
- The project graphics, renderings and text provided herein are copyrighted works. All rights reserved. Unauthorized reproduction, display or other dissemination of such materials is strictly prohibited and constitutes copyright infringement.
- The developers have taken care to ensure that the information is accurate at the time of its inclusion in this brochure.

